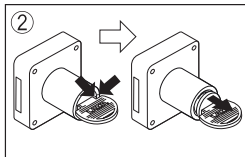
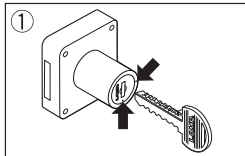


LAMP® 内筒 5830 - N1のはずし方



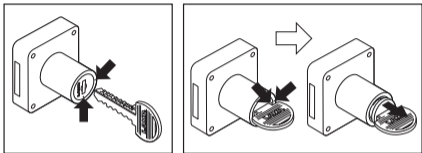
シリンダー錠内筒 5830 - N1の装着方法

キーが差し込まれたシリンダー錠内筒5830-N1の先端形状T字の凸部と本体ユニットT字の凹部を合わせ挿入後、時計回りに45度回すと装着できます。装着後施錠、解錠、キーの抜き差しを確認してください。



SUGATSUNE KOGYO CO. LTD.

LAMP®



HOW TO PULL OUT THE CYLINDER

Insert an changing key(5830-K1) into the cylinder and turn the cylinder core until the dots on the core and housing are lined up. Then, pull out the key.

CYLINDER CORE INSTALLATION

Insert the cylinder core with a locking key into the cylinder housing while lining up the dots on the core and the housing. Turn the core 45° clockwise and ensure that you can lock and unlock before removing key.



SUGATSUNE KOGYO CO. LTD.