

LAMP® FD30-F FOLDING DOOR SYSTEM Installation Manual

(Slidable folding, Center hinge Back side recessed mount)

Part No.FD30UMP

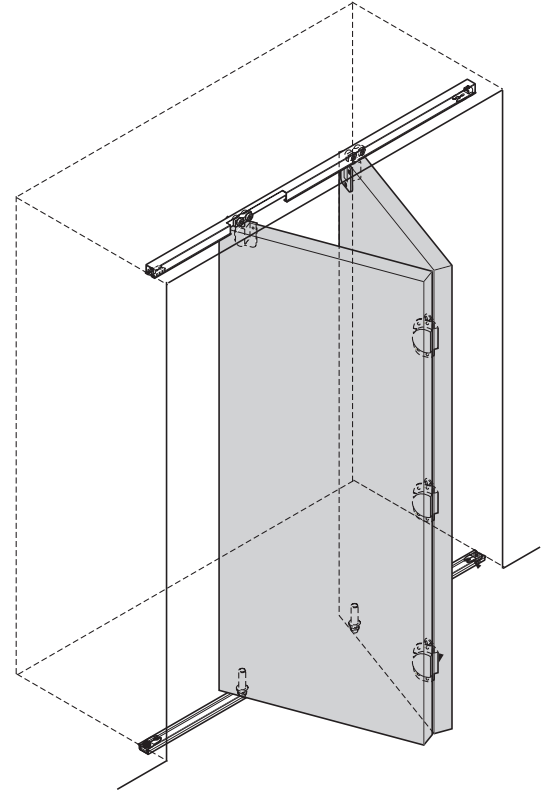
Thank you for selecting our product. Before installation, please read this manual thoroughly to ensure correct installation. Please keep this manual at hand for future reference.

ABOUT THE PRODUCT

- This product is a parts set for folding door system for indoor use.
- Easy door installation and adjustment.

SPECIFICATION

Max. Door width	450 mm
Max. Door height	2400 mm
Min. Door thickness	30 mm
Max. Door weight	15 kg / door
Vertical adjustment	±4 mm



FOR YOUR SAFETY AND CORRECT INSTALLATION

Meaning of symbols

 Warning Caution	 Prohibited	 Required
---	---	---

Warning : If not followed, death or serious injury may result.

- ❗ This product should be installed by a qualified person in accordance with this manual. If it is not installed correctly, the door may fall and cause injury.
- ❗ Provide a frame that can withstand the weight and impact of opening and closing the door. Be sure to use the specified screws and tighten them securely. If the mounting strength is insufficient, the door may fall and cause injury.
- ⊘ Do not use this product for any other purpose, or with doors that are outside the specifications of this manual.
- ⊘ Do not disassemble or modify any parts other than those described in this document.

Caution : If not followed injury or damage may result.

- ❗ Follow the specified dimensions, specifications, and alignment of the door and frame. Warping, tilting or twisting of the frame or door may cause failure.
- ❗ If cutting any parts, make sure to remove any burrs before installation. Also check the upper track for any left-over burrs or scraps and remove these.
- ❗ This product is a part for architectural fittings. After installation, please check the function and safety of the final product. Please inform the end user how to use the product safely.
- ❗ Make sure to check the screws for slack at regular intervals (one month from first usage, half a year, and then one time every year is recommended).

COMPONENT PARTS (PER BOX)

No.	①	②	③	④	⑤	⑥
Name	Upper roller (side mount)	Guide pin	Pin insert jig	Upper stopper	Bottom stopper	Center hinge (recessed)
Item No.	FD30-WRU	FD30-FGR	FD30-FSJ	FD30-FTST	FD30-FBKS	FD30-CHH
Item						
Accessories	Binding Head Tapping screw 3.5×20...3pcs	—	—	—	—	Countersunk head Tapping screw 3.5×16...3pcs
2-door reversible separator	2	2	1	2	2	3
4-door reversible separator	4	4	1	2	2	6

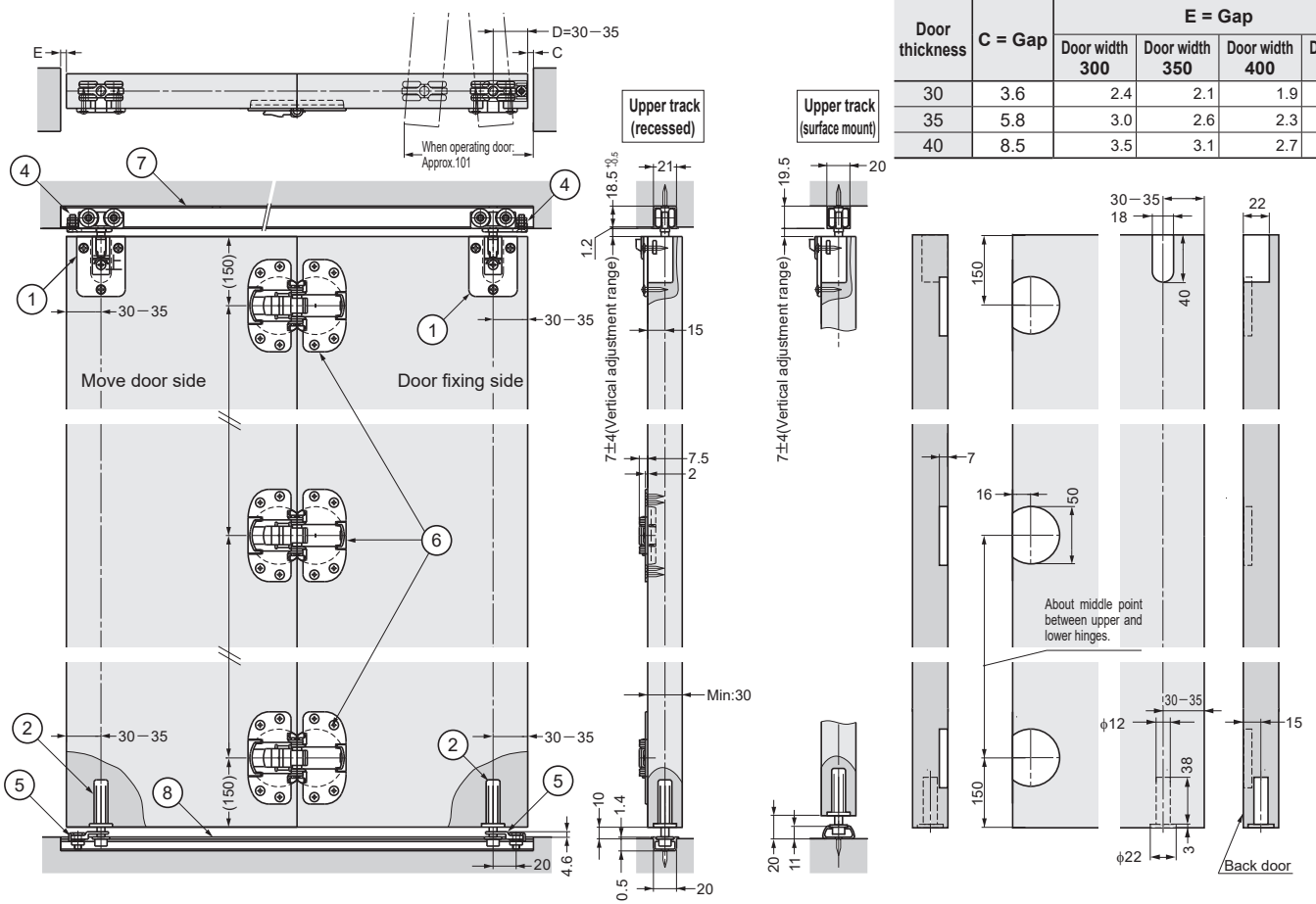
No.	⑦		⑧	
Name	Upper track (surface mount)	Upper track (recessed mount)	Bottom guide track (surface mount)	Bottom guide track (recessed mount)
Item No.	FD30-TRM	FD30-TRH	FD30-FBRM	FD30-FBRH
Item	 Hole pitch:300 mm Pitch end:30 mm Recommended screw: Countersunk head tapping screw 3.5 × 20		 Hole pitch:300 mm Pitch end:30 mm	
Accessories	—		Countersunk head wood screw 3.5×16	
2-door reversible separator	Use 1 (surface mount or recessed)		Use 1 (surface mount or recessed)	
4-door reversible separator	Use 1 (surface mount or recessed)		Use 1 (surface mount or recessed)	

INSTALLATION DRAWING (EXAMPLE)

Door opening (when 40 mm door thickness, 450 mm door width)

Minimum Dimension between Frame and Door

Door thickness	C = Gap	E = Gap			
		Door width 300	Door width 350	Door width 400	Door width 450
30	3.6	2.4	2.1	1.9	1.7
35	5.8	3.0	2.6	2.3	2.1
40	8.5	3.5	3.1	2.7	2.5



INSTALLATION PROCEDURE

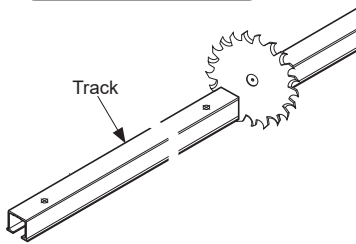
(In this manual, a single folding door is used as an example.)

1 Cutting Track

Cut the track applying a reinforcer to prevent deformation of cut section.

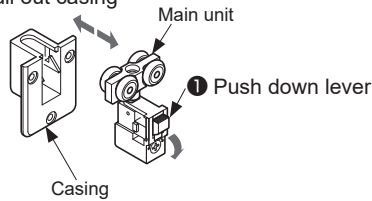
⚠ Caution

Remove any dirt or chips from the tracks.

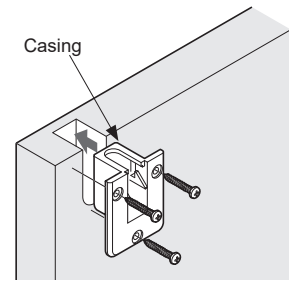


2 Remove Casing

2 Pull out casing

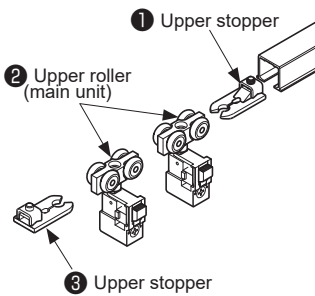


3 Mounting Casing

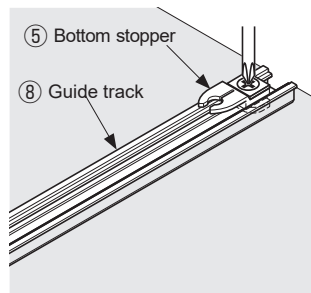


4 Inserting Parts into Track

Insert the parts ① to ③ with care of direction. Then, fix Upper stoppers, temporarily to prevent drop of inserted parts.

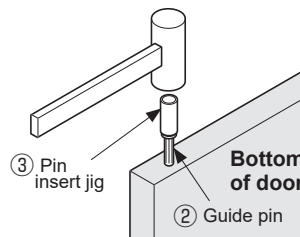


5 Assembling Bottom Stopper 6 Assembling Guide Pin



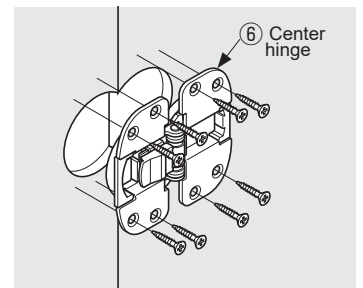
⚠ Caution

Be careful not to damage the plastic part of guide pin.



7 Mounting Center Hinge

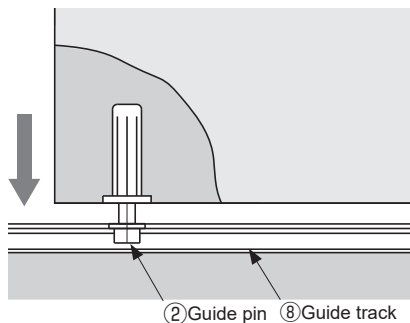
Fix all of Center hinges in a same direction.



8 Hanging Door

1. Bottom

Insert guide pin in guide track groove.

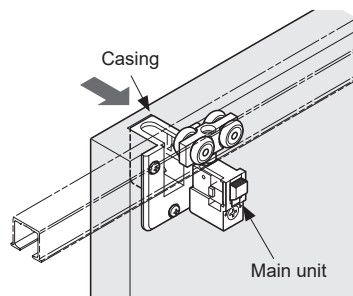


2. Top

Insert upper roller main unit into the casing installed on door until click sound is heard.

⚠ Caution

Verify that the main unit is firmly clipped in the casing.

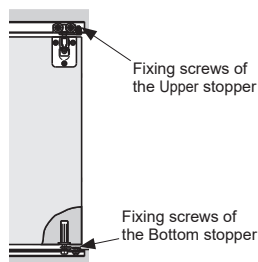


9 Verification of Door Movement and Adjustment

Move the door slowly. When door is not moved smoothly, adjustment may be needed to correct door position.

1. Inclination adjustment

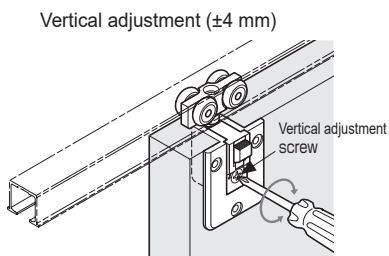
Loosen upper stopper and bottom stopper to make the door vertical. Then, retighten screws.



2. Vertical adjustment

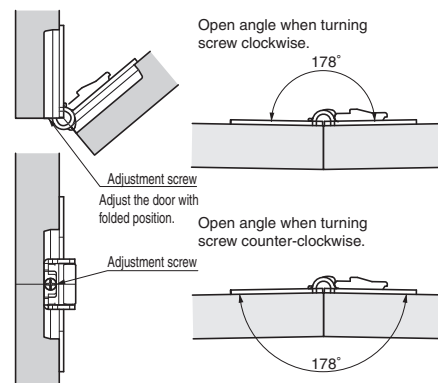
Adjust the screw on upper roller with Philips screw driver.

Caution
Do not use electric screw drivers.
Do not turn adjustment screw beyond the adjustment range.

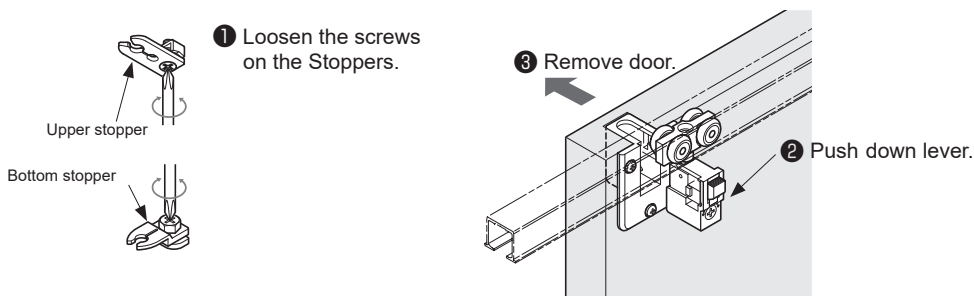


3. Adjustment of door angle

Turn the screw on center hinge (Max ±2 degree)



Supplement How to Remove Door



PERIODICAL INSPECTION	Check
	<ul style="list-style-type: none"> • Clean the inside of the track. • Check the upper and lower space of the door. If necessary, correct the space.

TROUBLESHOOTING

Trouble	Check	Solution
Abnormal noise during operation	Check if door touches adjacent parts.	Adjust the door position to avoid contact with other objects.
	Check track rollers for aluminum dust.	Remove the track, then pull out and clean the roller.
	Check the track mounting screws for looseness.	Retighten the screws to free the roller.
Heavy door operation	Check if door bottom contacts the floor or floor guide.	Verify that the track mounting screws are not loosened. Then, adjust the door height such that the clearance between the door bottom and floor is 10 mm. (20 mm : Surface mount type guide track)
	Check if door touches adjacent parts.	Adjust the door position to avoid contact with other objects.
Door does not move.	Check the track mounting screws for looseness.	Retighten the screws to free the roller.
Door starts to move.	Check if the upper track is set horizontally.	Using a level gauge, reset the upper track horizontally.

SUGATSUNE KOGYO CO., LTD.
Tokyo, JAPAN
Phone: +81 3 3866 2260
E-mail: export@sugatsune.co.jp

SUGATSUNE KOGYO (UK) LIMITED
Reading, UK
Phone: +44 1189 272 955
E-mail: sales@sugatsune.co.uk

SUGATSUNE EUROPE GmbH
Düsseldorf, GERMANY
Phone: +49 211 53812 900
E-mail: sales@sugatsune.eu

SUGATSUNE AMERICA, INC.
California, USA
Phone: +1 310 329 6373
E-mail: sales@sugatsune.com

Chicago, USA
Phone: +1 630 317 7072
E-mail: sales@sugatsune.com

SUGATSUNE CANADA, INC.
Montreal, CANADA
Phone: +1 514 312 5267
E-mail: support@sugatsune.ca

SUGATSUNE SHANGHAI CO., LTD.
Shanghai, CHINA
Phone: +86 21 3632 1858
E-mail: lamp@sugatsune.com.cn

Guangzhou, CHINA
Phone: +86 20 6639 3554
E-mail: lamp@sugatsune.com.cn

SUGATSUNE KOREA CO., LTD.
Incheon, KOREA
Phone: +82 32 220 0603
E-mail: sales@sugatsune-korea.co.kr

SUGATSUNE KOGYO INDIA PRIVATE LIMITED
Mumbai, INDIA
Phone: +91 9867299597
E-mail: sales@sugatsune.in
Delhi, INDIA
Phone: +91 9867299597
+91 11 45093636
E-mail: sales@sugatsune.in