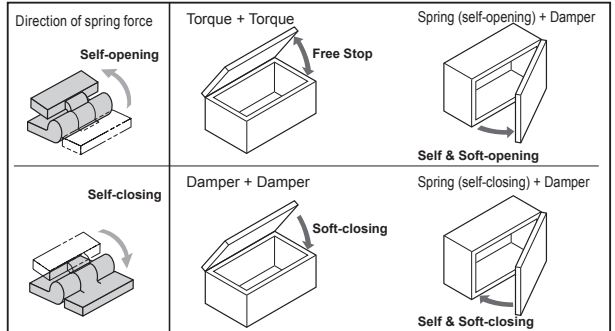


LAMP® HG-VH8 Combination Hinge Installation Instructions by Extension DesignTEC®

Thank you for selecting our product. Before starting installation, please read this manual thoroughly to ensure correct installation. Please keep this manual at hand for future reference.

ABOUT THE PRODUCT

- Hinges for light weight lids, doors.
- Various motions in the same appearance
- Various combinations such as self-opening hinge + damper hinge (refer to "Possible combinations")



SPECIFICATIONS

Order code	Part No.	ID stamp	Color	Part built in	Torque N·m / piece	Operating temperature range
170-032-616	HG-VH8-N-BL	N	Black	—	—	10 - 40°C
170-032-617	HG-VH8-N-WT		White	—	—	
170-032-618	HG-VH8-D3-BL	D3	Black	Damper	0.022 - 0.038	
170-032-619	HG-VH8-D3-WT		White	Damper	0.022 - 0.038	
170-032-620	HG-VH8-OP-BL	OP	Black	Spring (self-opening)	* increase 0.0153 cNm by 30° of revolution	
170-032-621	HG-VH8-OP-WT		White	Spring (self-opening)	* increase 0.0153 cNm by 30° of revolution	
170-032-622	HG-VH8-CL-BL	CL	Black	Spring (self-closing)	* increase 0.0153 cNm by 30° of revolution	
170-032-623	HG-VH8-CL-WT		White	Spring (self-closing)	* increase 0.0153 cNm by 30° of revolution	
170-032-624	HG-VH8-T15-BL	T1	Black	Torque	0.15±33%	
170-032-625	HG-VH8-T15-WT		White	Torque	0.15±33%	
170-032-626	HG-VH8-T35-BL	T3	Black	Torque	0.35±29%	
170-032-627	HG-VH8-T35-WT		White	Torque	0.35±29%	

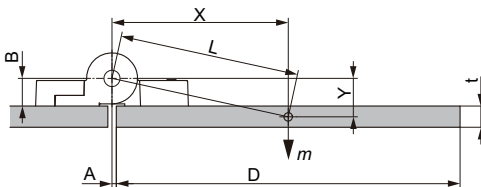
Possible combinations

Type of hinges	ID stamp	N	D3	OP	CL	T1	T3
Normal	N	○	○	○	○	○	○
Damper	D3	○	○	○	○	—	—
Spring (self-opening)	OP	○	○	○	—	△	△
Spring (self-closing)	CL	○	○	—	○	△	△
Torque	T1	○	—	△	△	○	○
Torque	T3	○	—	△	△	○	○

△ Please carry out thorough tests before using since performance with these combinations might vary depending on door size and weight.

* See "How to adjust spring torque" on the right page.

MAXIMUM LID TORQUE CALCULATION



$$T = mx9.8xL$$

T : Maximum lid torque (cN·m)

m : Lid weight (kg)

D : Lid length (cm)

$$X = D/2 + A$$

$$Y = t/2 + B$$

L : Distance between rotation center and gravity center of lid

$$L = \sqrt{X^2 + Y^2}$$

(Calculation example)

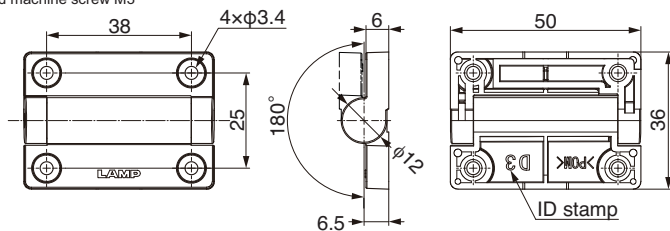
When $D=12$ cm, $A=0.1$ cm, $B=0.65$ cm, $t=0.5$ cm, $m=0.08$ kg

$$L = \sqrt{(12/2 + 0.1)^2 + (0.5/2 + 0.65)^2} = 6.13 \text{ cm}$$

$$T = 0.08 \times 9.8 \times 6.13 = 4.8 \text{ cN·m} = 0.048 \text{ N·m}$$

DIMENSION

Recommended screw : Bind head machine screw M3



FOR YOUR SAFETY WORK AND OPERATION

Meaning of symbols



**Warning
Caution**



Prohibited



Required



Cautions: If these cautions are not followed, it may result in injury or damage.

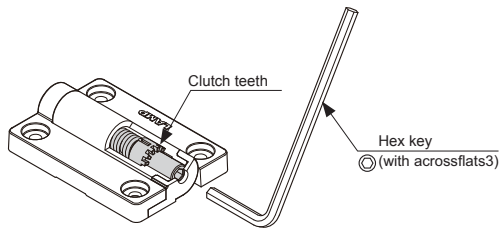
- ❗ This product is for indoor use only. Do not use outside or anywhere where it will be exposed to water.
- ❗ Do not use lubricant on the hinges since it may damage the hinges.
- ⊗ Align the rotation center of the hinges.
- ⊗ Use within the specified torque range. (Damper hinges and torque hinges)

How to adjust spring torque (Spring hinges only)

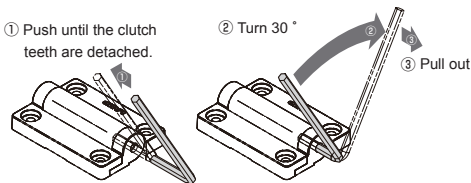
Note that the direction to increase the spring torque for Self-open is different from the direction for Self-closing type.

Caution

Improper adjustment may cause abnormal sound or damage of the part.



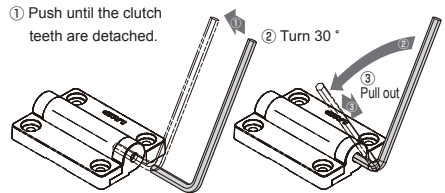
Self-opening



Check if the lid or door opens smoothly when it is released.
If opening force is not enough, repeat step ① to ③.

The torque increases $0.0153N \cdot m$ by every 30° of turn.
The increasing limit is up to 4 turns (120°). If you like to decrease the torque, turn the hex key to the opposite direction.

Self-closing



Check if the lid or door closes smoothly when it is released.
If closing force is not enough, repeat step ① to ③.

The torque increases $0.0153N \cdot m$ by every 30° of turn.
The increasing limit is up to 4 turns (120°). If you like to decrease the torque, turn the hex key to the opposite direction.

Caution

❗ Before turning the hex key, make sure to push it enough so that the clutch teeth is released.

SUGATSUNE KOGYO CO.,LTD
Tokyo, JAPAN
Phone: +81 (0)3 3866 2260 E-mail:export@sugatsune.co.jp

SUGATSUNE KOGYO (UK) LTD
Reading, UK
Phone: +44 118 9272 955 E-mail:sales@sugatsune.co.uk

SUGATSUNE EUROPE GmbH
Düsseldorf, GERMANY
Phone: +49 211 53812900 E-mail:sales@sugatsune.eu

SUGATSUNE SHANGHAI Co., LTD
Shanghai, CHINA
Phone: +86 21 3632 1858 E-mail:lamp@sugatsune.com.cn

Guangzhou, CHINA
Phone: +86 20 6639 3552 E-mail:lamp@sugatsune.com.cn

SUGATSUNE KOGYO INDIA PRIVATE LIMITED
Mumbai, INDIA
Phone: +91 22 28314490/91 E-mail:sales@sugatsune.in

SUGATSUNE AMERICA, INC
California, USA
Phone: +1 310 329 6373 E-mail:sales@sugatsune.com

Chicago, USA
Phone: +1 630 317 7072 E-mail:sales@sugatsune.com

SUGATSUNE CANADA, INC.
Phone: +1 514 312 5267 E-mail:support@sugatsune.ca

ISO9001(Japan Offices and Sugatsune America) and ISO14001(Chiba Production division and Logistics center), certified.

2022.07 0952-5s