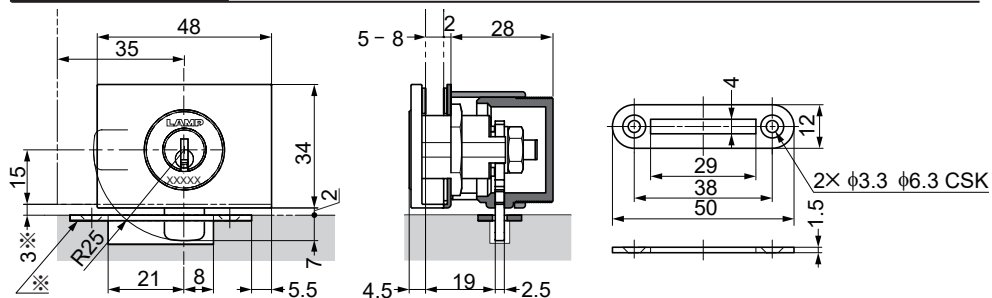


# LAMP® GS-GL5 GLASS DOOR CAM LOCK INSTALLATION MANUAL

Thank you for selecting our product. Before starting installation, please read this manual thoroughly to ensure correct installation. Please keep this manual at hand for future reference.

❗ It is recommended to use shatter-proof film on the glass. For areas where the glass brackets grip, make sure to remove the shatter-proof film before installing.

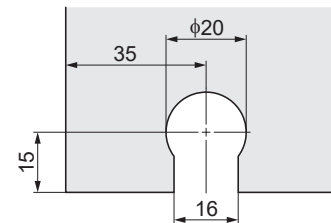
## DIMENSIONS



※ When placing the strike plate, make a 5 mm gap from the bottom board or use the optional Doorstop strike plate GS-GL5HTU.

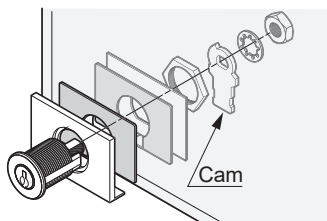
## GLASS CUTOUT

Thickness : 5 - 8 mm



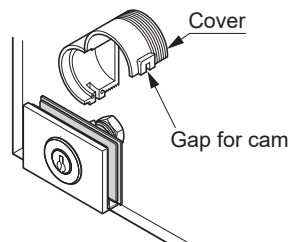
## INSTALLATION

### 1 Parts Assembly

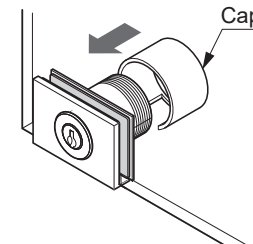


### 2 Assembling cover

Firmly close the cover over the protruding end of the lock.



### 3 Assembling Cap



**SUGATSUNE KOGYO CO.,LTD**  
Tokyo, JAPAN

Manufacturer of **LAMP** brand Products

Phone: +81 (0)3 3866 2260 E-mail: [export@sugatsune.co.jp](mailto:export@sugatsune.co.jp) 2020.06 1077-3