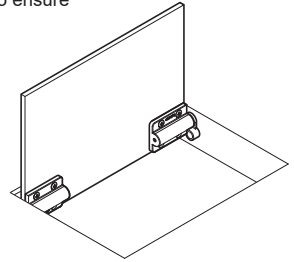


Thank you for using our product. Before installation, please read this manual thoroughly to ensure correct installation. Please keep this manual at hand for future reference.

ABOUT THE PRODUCT

- Features:
 - Small damper hinge with self-opening function for top-opening lids .
 - Use with a push-latch enables pop-up function of the lid.
- Use: Small covers for desktop sockets, small covers for machinery and equipment, etc. (Used in combination with push latch, etc.)
- Range of use: Lids of a size and weight less than the damper torque
(See the Specifications table and Maximum Lid Torque Calculation)
- Operating temperature range: 0- 40°C



SPECIFICATIONS

In this guide, "left" refers to the left side when looking at the cabinet from the front.

Order code	Part No.	Colour	Type	Torque
170-028-293	HG-JHS9-S-BL	Black	Side-mounted	0.035±0.008N・m
170-028-294	HG-JHS9-S-WT	White		
170-028-295	HG-JHS9-U-BL	Black	Rear-mounted	
170-028-296	HG-JHS9-U-WT	White		

PRECAUTIONS FOR USE

The possibility of injury or property damage only is assumed.

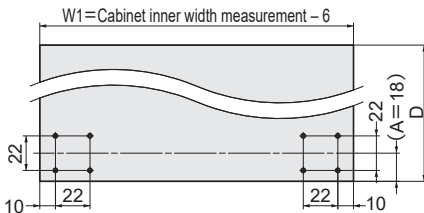
- ⊘ This product is for indoor use only. Do not use outside or anywhere where it will be exposed to water.
- ⊘ Do not use for an other purpose or with specifications other than those shown in this document.
- ⊘ Do not use excessive force with the damper as this may result in damage.
- ※ If the operating temperature increases, the door movement becomes quicker. If the temperature decreases, movement becomes slower. This is not a mechanical problem.

Meaning of symbols

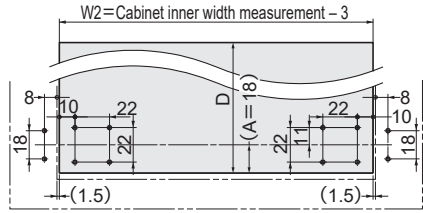


Side-mounted type		Rear-mounted Type	
<p>Component Parts</p> <p>① Bracket...2 pcs Right: Damper installed. Left: Install Spring assy.</p> <p>Left Right</p> <p>② Spring assy</p> <p>③ Side bracket ...L/R 1 each (marked L and R) Screws (to be supplied by the user) Countersunk head screw M3 or Countersunk head wood screw 3.1 or Countersunk head tapping screw 3 } X 4 pcs Bind head screw M3 or Pan head tapping screw 3.1 } X 8 pcs or Bind head tapping screw 3 }</p>	<p>Front View</p> <p>Countersunk hole (3)</p> <p>① Damper (Left: Spring assy)</p> <p>②</p> <p>Rear View</p> <p>4× φ3.5 bore Counterbore φ7.2 Depth 2</p>	<p>Component Parts</p> <p>① Bracket...2 pcs Right: Damper installed. Left: Install Spring assy.</p> <p>Left Right</p> <p>② Spring assy</p> <p>③ Side bracket ...L/R 1 each (marked L and R)</p> <p>Screws (to be supplied by the user) Bind head screw M3 or Pan head tapping screw 3.1 } X 12 pcs or Bind head tapping screw 3 }</p>	<p>Front View</p> <p>① Damper (Left spring assy)</p> <p>②</p> <p>Rear View</p> <p>4× φ3.5 bore Counterbore φ7.2 Depth 2</p>

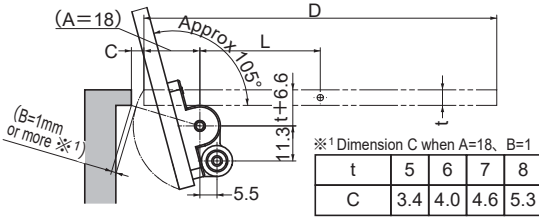
Position of Lid Mounting Holes (Seen from rear)



Position of Lid Mounting Holes (Seen from rear)



INSTALLATION EXAMPLE



t	5	6	7	8
C	3.4	4.0	4.6	5.3

- Make sure that the gap B when the lid is open is 1mm or more.
- Provide a push latch to hold the lid at the closed position.

MAXIMUM LID TORQUE CALCULATION

$$T = m \times 9.8 \times L$$

$$L = D/2 - A$$

T : Maximum lid torque (N·m)
 m : Lid weight (kg)
 L : Distance from rotation centre to lid centre of gravity (m)
 D : Lid length (m)
 A : Length of lid back from rotation centre (m)

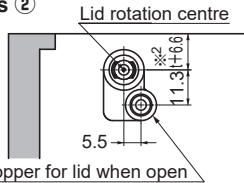
(Calculation example)

When $D=0.12$ m, $A=0.018$ m, $m=0.085$ kg
 $T = 0.085 \times 9.8 (0.12/2 - 0.018) = 0.035$ N·m

INSTALLATION

Side-mounted Type

1. Mounting of brackets ②

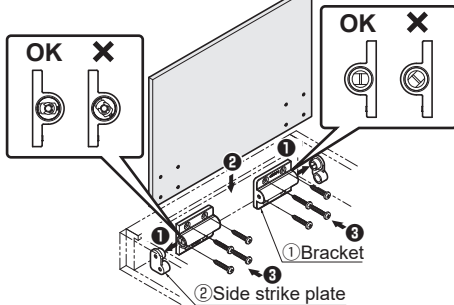


※2 The above shows the lid and frame height in aligned position when the lid is closed.

⚠ Be sure to install the left and right mounting plates correctly. (The plates are marked L and R)

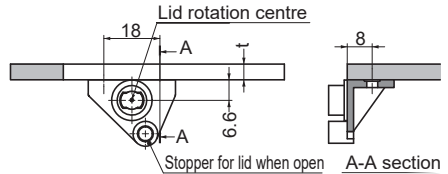
2. Mounting of body and lid

Install in order of ① to ③



Rear-mounted Type

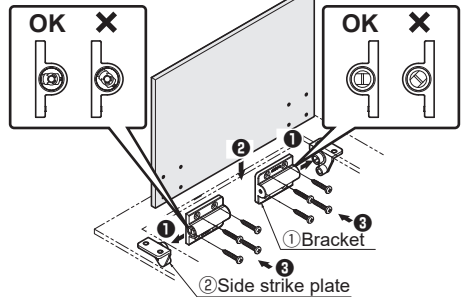
1. Mounting of brackets ②



⚠ Be sure to install the left and right mounting plates correctly. (The plates are marked L and R)

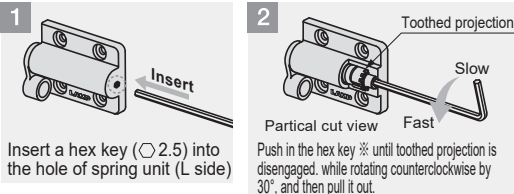
2. Mounting of body and lid

Install in order of ① to ③



ADJUSTMENT OF LID OPENING SPEED

When increasing lid opening speed



Insert a hex key (2.5) into the hole of spring unit (L side)

Push in the hex key ※ until toothed projection is disengaged, while rotating counterclockwise by 30°, and then pull it out.

Close the lid, and check if the lid can be opened smoothly. Repeat steps 1~3 (maximum 1-2 times) if lid opening speed is still slow.

When decreasing lid opening speed (returning to the speed before adjustment)

Loosen the force following the hex key rotating clockwise.

※ Make sure to rotate counterclockwise following pushing in the hex key and disengaging the projection. Forced rotation may cause damage.

SUGATSUNE KOGYO CO., LTD.
 Tokyo, JAPAN
 Phone: +81 3 5866 2260
 E-mail: export@sugatsune.co.jp

SUGATSUNE KOGYO (UK) LIMITED
 Reading, UK
 Phone: +44 1189 272 955
 E-mail: sales@sugatsune.co.uk

SUGATSUNE EUROPE GmbH
 Düsseldorf, GERMANY
 Phone: +49 211 53612 900
 E-mail: sales@sugatsune.eu

SUGATSUNE AMERICA, INC.
 California, USA
 Phone: +1 510 329 6373
 E-mail: sales@sugatsune.com

Chicago, USA
 Phone: +1 630 317 7072
 E-mail: sales@sugatsune.com

SUGATSUNE CANADA, INC.
 Montreal, CANADA
 Phone: +1 514 312 5267
 E-mail: support@sugatsune.ca

SUGATSUNE SHANGHAI CO., LTD.
 Shanghai, CHINA
 Phone: +86 21 3632 1856
 E-mail: lamp@sugatsune.com.cn

Guangzhou, CHINA
 Phone: +86 20 6639 3554
 E-mail: lamp@sugatsune.com.cn

SUGATSUNE KOREA CO., LTD.
 Incheon, KOREA
 Phone: +82 32 220 0603
 E-mail: sales@sugatsune-korea.co.kr

SUGATSUNE KOGYO INDIA PRIVATE LIMITED
 Mumbai, INDIA
 Phone: +91 9867295957
 E-mail: sales@sugatsune.in
 Delhi, INDIA
 Phone: +91 9867295957
 +91 11 45093636
 E-mail: sales@sugatsune.in