

Damper Hinge HG-JHW16S Installation Instructions LAMP

HG-JHW16S damper hinge was designed and manufactured with Sugatsune's utmost care in order to give you a high performance and smooth operation on a long time basis. We ask you to follow these instructions for the best possible results and carefree use throughout its lifetime.

Safety recommendations If not followed, injury or damage may result.

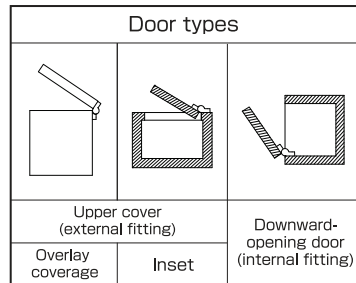
- Please use this damper hinge only within the specifications shown in this manual.
- Do not disassemble.
- Do not close the door violently or it can cause damage to the product.

Warranty If not followed, injury or damage may result.

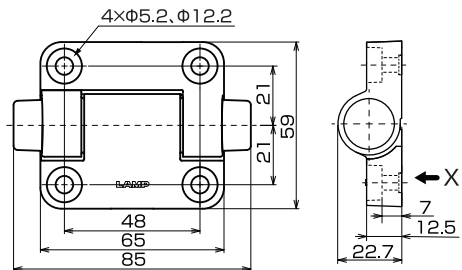
- △ HG-JHW16S damper hinge was produced with a particular attention to its quality. Should you however experience any difficulty, please refer to your local supplier or Sugatsune Export Department (export@sugatsune.co.jp).
- △ The liability of Sugatsune is limited to the replacement of the damper hinge itself.
- △ Sugatsune cannot accept any liability for damage incurred while using this damper hinge.
- △ Standard warranty is for one-year period from the date of shipment.

Checking before the installation If not followed, injury or damage may result.

- The product can be fitted to any of the three types of doors shown at right.
- Use the product within the prescribed load torque range (See the table in [2.Specifications](#)). An excessive load torque can cause damage to the product.
- Provide a door stopper to prevent the product from turning beyond the prescribed range (See [3.Damper Effective Angle](#) and [6.Application Examples](#)).
- When more than one hinge is used for a door, fit them paying attention to the shaft alignment. An off-center shaft can increase the load or prevent smooth hinge operation.

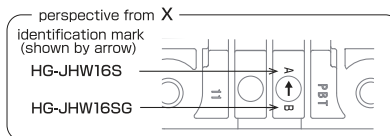


1. Dimensions



⚠ Screws not included

Recommended screw and washer
M5 hexagon socket head screw × 4
washer 5mm in nominal diameter × 4

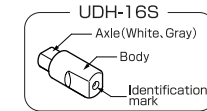


2. Specifications

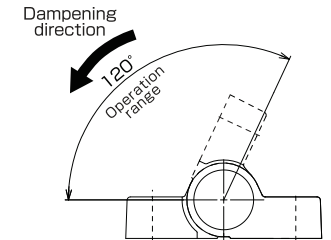
Item No.	Moment N·m[kgf·cm]	UDH-16S Model No.(identification)
HG-JHW16S-00	0.0[0.0]	
HG-JHW16S-34	2.0~3.4[20.4~34.7]	M-type(Blue)
HG-JHW16S-50	3.4~5.0[34.7~51.0]	H-type(Red)

※The moment indicated is at 1 pc use.

- Operating temperature : 0 to 40°C
- Operating humidity : Max90%RH
- ※The damper force is affected by room temperature.



3. Damper Effective Angle



4. Installation Procedure

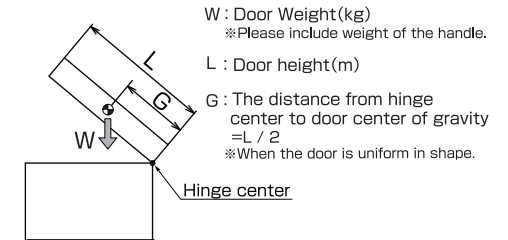
- Fix the product to the cabinet referring to [3.Damper Effective Angle](#) and [6.Application Example](#).

- ⚠ Tightening Torque : up to 2.0N·m
- ⚠ Do not use the impact screwdriver.

- Open/close the door and check if the door moves smoothly and the damper is effective.

- ⚠ Do not apply excessive force to open the door or push down the door to close it with a hand.

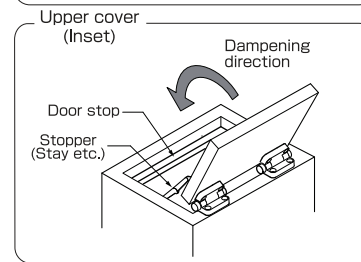
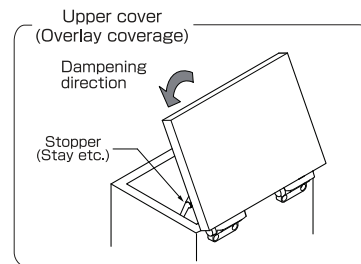
5. Maximum Moment Calculation



W : Door Weight(kg)
※Please include weight of the handle.
L : Door height(m)
G : The distance from hinge center to door center of gravity
=L / 2
※When the door is uniform in shape.

$$\text{Moment} = W \times G \times 9.80665(\text{N} \cdot \text{m})$$

6. Application Examples



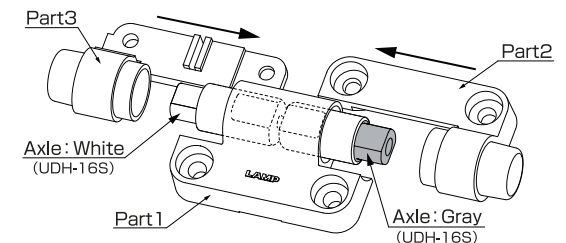
⚠ Caution : How to assemble the Damper Hinge

By any chance the product is disassembled, please re-assemble as per below

- 1 : Insert the UDH-16S into Part 1. (See [2.Specifications](#))

- ⚠ Make sure that the Axle and Identification Mark is correct. Wrong setup may cause breakage to the UDH-16S

- 2 : Insert Part2 and 3 to Part1.(See [1.Dimensions](#))



SUGATSUNE KOGYO CO.,LTD
Tokyo, JAPAN
Phone: +81 (0)3 3866 2260 E-mail:export@sugatsune.co.jp
SUGATSUNE KOGYO (UK) LTD
Reading, UK
Phone: +44 118 9272 955 E-mail:sales@sugatsune.co.uk
SUGATSUNE EUROPE GmbH
Düsseldorf, GERMANY
Phone: +49 211 53812900 E-mail:sales@sugatsune.eu
ISO9001(Japan Offices and Sugatsune America) and ISO14001(Chiba Production division and Logistics center), certified.

SUGATSUNE SHANGHAI Co., LTD
Shanghai, CHINA
Phone: +86 21 3632 1858 E-mail:lamp@sugatsune.com.cn
Guangzhou, CHINA
Phone: +86 20 6639 3552 E-mail:lamp@sugatsune.com.cn

SUGATSUNE KOGYO INDIA PRIVATE LIMITED
Mumbai, INDIA
Phone: +91 22 28314490/91 E-mail:sales@sugatsune.in

SUGATSUNE AMERICA, INC
California, USA
Phone: +1 310 329 6373 E-mail:sales@sugatsune.com
Chicago, USA
Phone: +1 630 317 7072 E-mail:sales@sugatsune.com
SUGATSUNE CANADA, INC.
Phone: +1 514 312 5267 E-mail:support@sugatsune.ca