

LAMP® STAINLESS STEEL Sliding Door Latch, HC-30、HC-30H(with indicator)、HC-30R(double-sided thumb turn type) Installation Instruction

Thank you for using our product. Before installation, please read this manual thoroughly to ensure correct installation.
Please keep this manual at hand for future reference.

ABOUT THE PRODUCT

- Stainless steel latch for sliding door.
- Can be unlocked from outside in case of emergency.

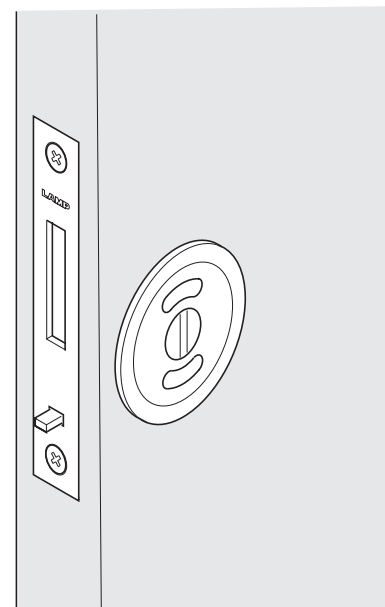
PRECAUTIONS FOR USE

Meaning of symbols

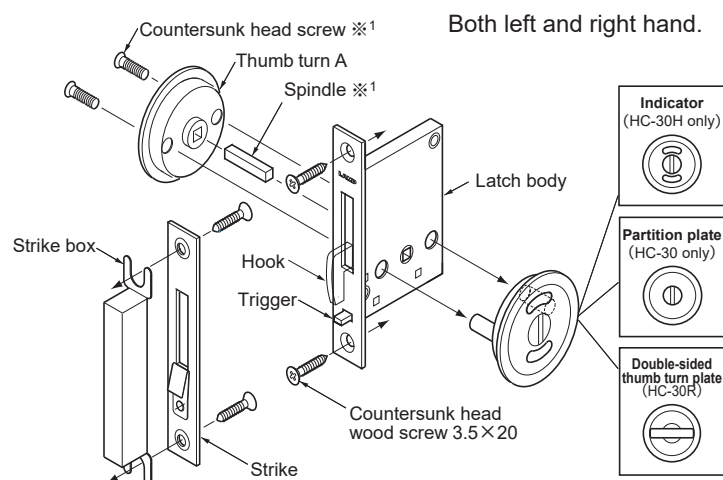
	Warning Caution		Prohibited		Required
--	---------------------------	--	-------------------	--	-----------------

Caution: If not followed, injury or damage may result.

- ❗ Make sure to follow the designated dimensions, specifications, and horizontal/vertical angles. Make sure that the cabinet and door are not warped, since it may cause failure.
- ❗ Make sure to check the screws for slack at regular intervals (one month from first usage, half a year, and then one time every year is recommended).



PARTS COMPOSITION



Both left and right hand.

Parts to be chosen according to the door thickness (※1)

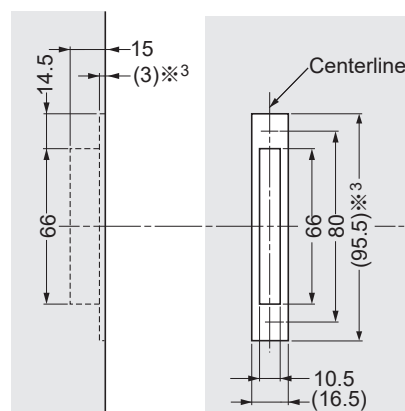
Door thickness	Thread length	Spindle Length※2	Type
28 - 31	12	23	HC-30 HC-30H HC-30R
32 - 36	17	27	
37 - 40	22	32	
41 - 44	25	35	HC-30R Only
45 - 48	27	39	
49 - 52	32	43	

※2 23 mm of spindle is assembled into the body.

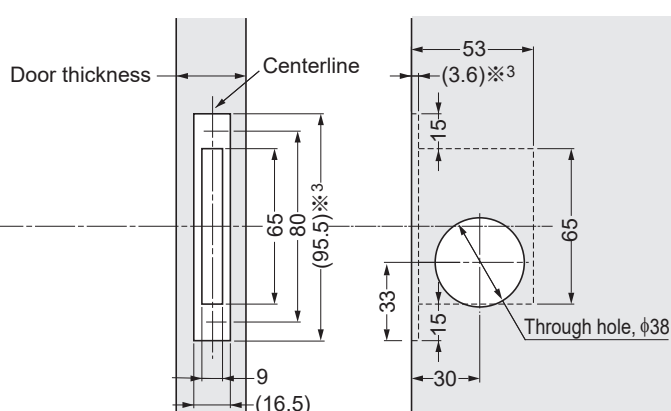
CUT OUT DRAWING FOR DOOR AND DOORJAMB

Align the vertical and horizontal centerlines for both mortises.

Doorjamb (for strike and strike box)



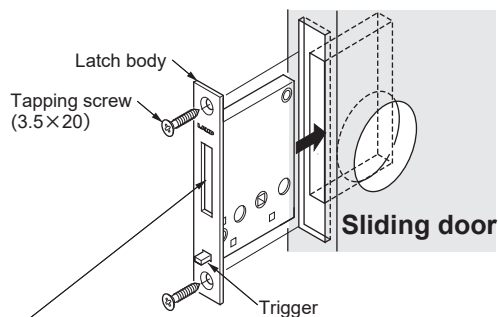
Door (for latch body)



※3 Process the parts according to the actual products.

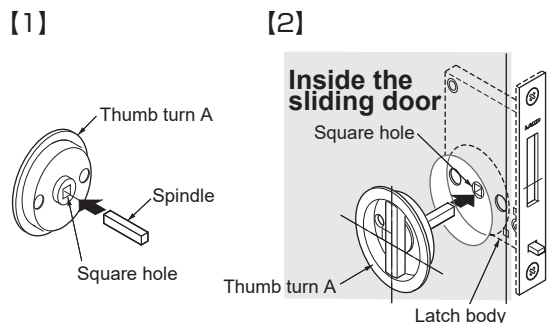
INSTALLATION

1 Latch Body

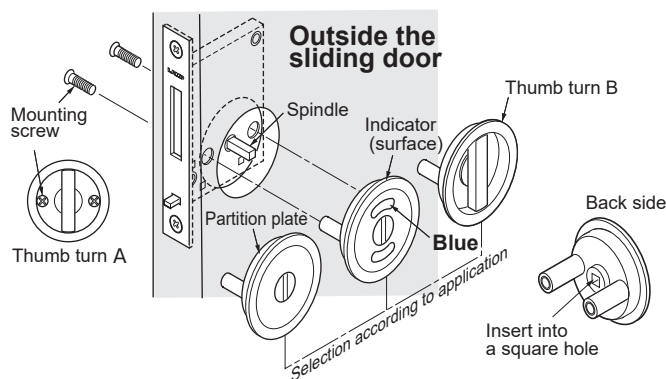


Make sure the hook is retracted in the case lock.
If the hook protrudes, insert the spindle into the square hole of latch body, turn the spindle to retract the hook while pushing the trigger.

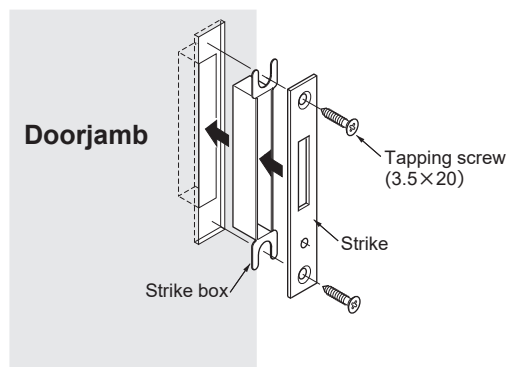
2 Thumb Turn, Spindle



3 Exterior Plate



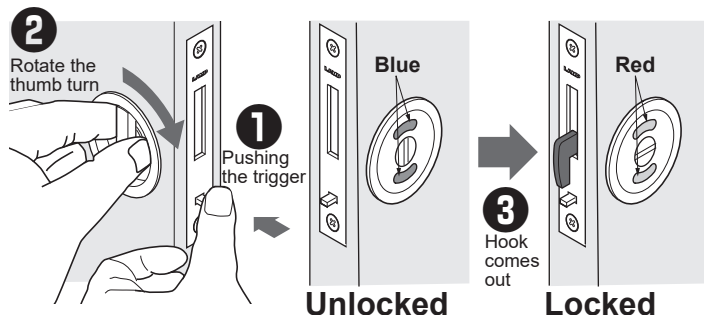
4 Strike, Strike Box



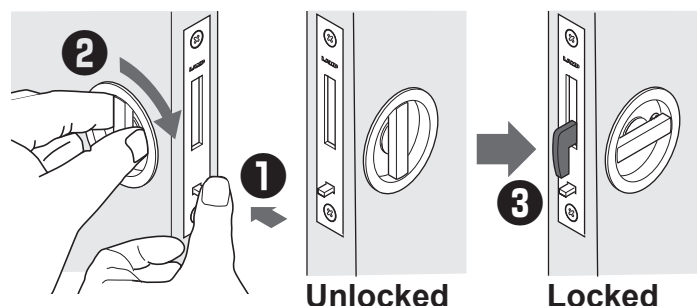
OPERATION CHECK

1 Thumb Turn

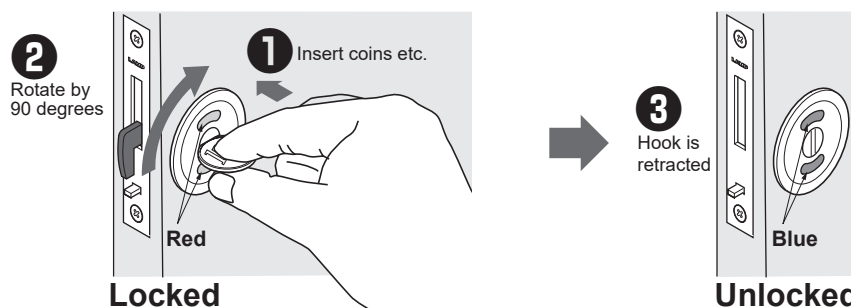
With indicator



Double-sided thumb turn type



EMERGENCY RELEASE (HC-30、HC-30H)



SUGATSUNE KOGYO CO.,LTD
Tokyo, JAPAN
Phone: +81 (0)3 3866 2260 E-mail: export@sugatsune.co.jp

SUGATSUNE KOGYO (UK) LTD
Reading, UK
Phone: +44 118 9272 955 E-mail: sales@sugatsune.co.uk

SUGATSUNE EUROPE GmbH
Düsseldorf, GERMANY
Phone: +49 211 53812900 E-mail: sales@sugatsune.eu

SUGATSUNE SHANGHAI Co., LTD
Shanghai, CHINA
Phone: +86 21 3632 1858 E-mail: lamp@sugatsune.com.cn

Guangzhou, CHINA
Phone: +86 20 6639 3552 E-mail: lamp@sugatsune.com.cn

SUGATSUNE KOGYO INDIA PRIVATE LIMITED
Mumbai, INDIA
Phone: +91 22 28314490/91 E-mail: sales@sugatsune.in

SUGATSUNE AMERICA, INC
California, USA
Phone: +1 310 329 6373 E-mail: sales@sugatsune.com

Chicago, USA
Phone: +1 630 317 7072 E-mail: sales@sugatsune.com

SUGATSUNE CANADA, INC.
Phone: +1 514 312 5267 E-mail: support@sugatsune.ca