

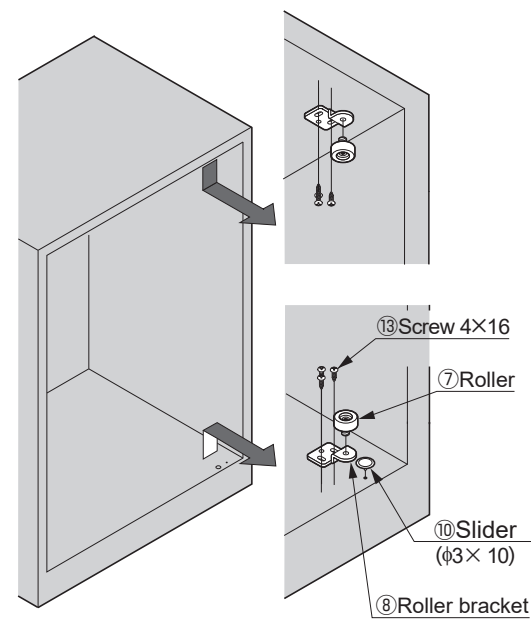
INSTALLATION PROCEDURE

1 Fixing Roller and Slider

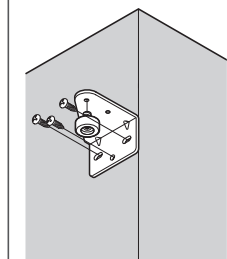
■Fixing on top board and bottom board

〈Use Roller bracket ⑧〉

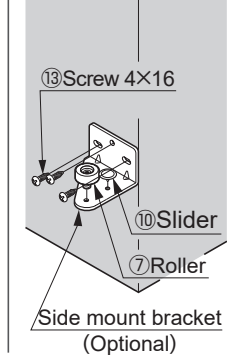
〈Use Insert ⑨〉



■Fixing on side board



Side wall of storage

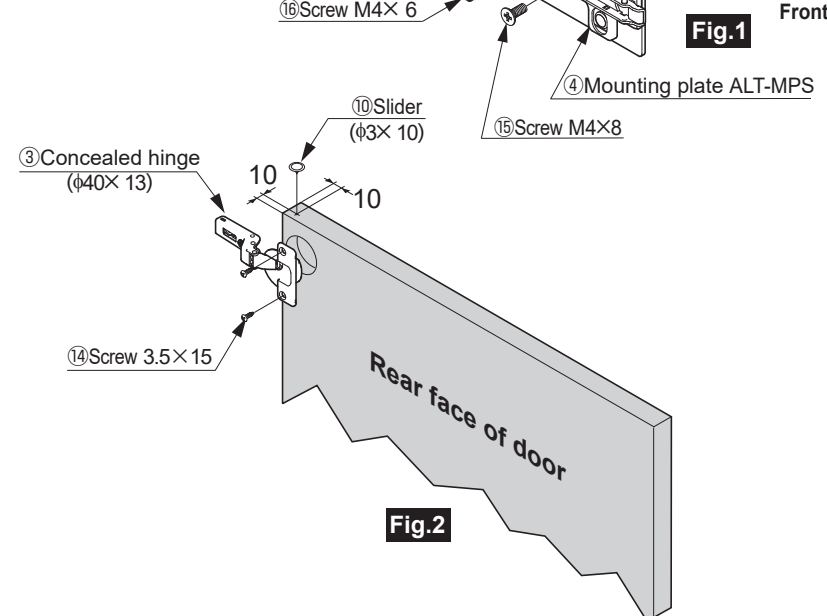


2 Fixing Mounting plate, Concealed hinge, Slider

■Mounting plate

Pay attention to the direction.

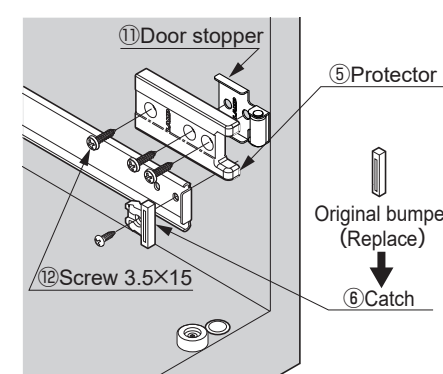
■Concealed hinge, Slider



3 Mounting Rail temporarily, Fixing Door stopper, protector

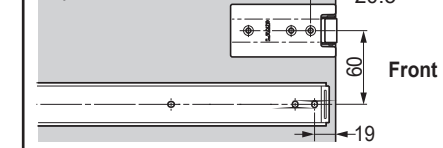
■Protector ⑤, Door stopper ⑪, Catch ⑥

Remove the original bumpers from the lower two rails (one for S type), and replace them with the catches. If the number of rails is two, replace it for the lower rail only.



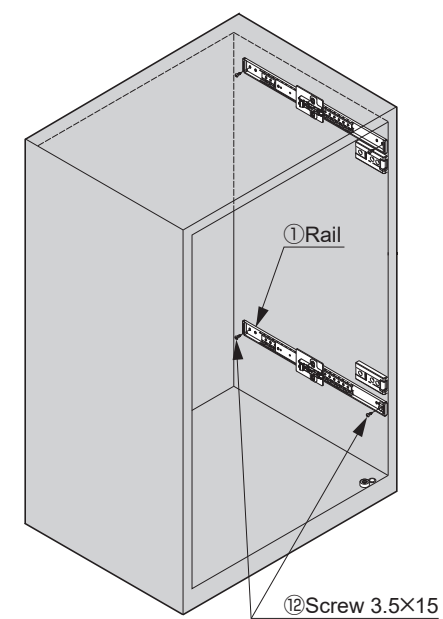
■Position of Rail

See "Installation drawing" for the position of each rail.



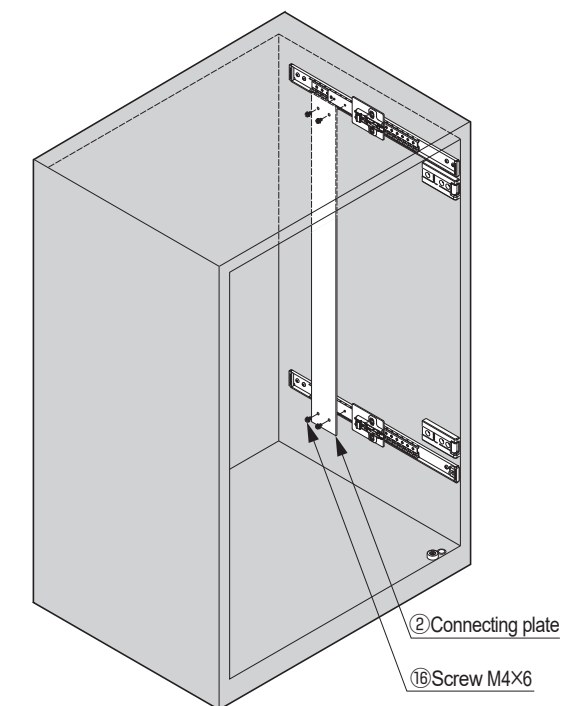
■Rail

Mount the rails in the specified position temporarily with two screws only. (Bind tapping screw 3.5 x 1.5) The rails will be fixed later.



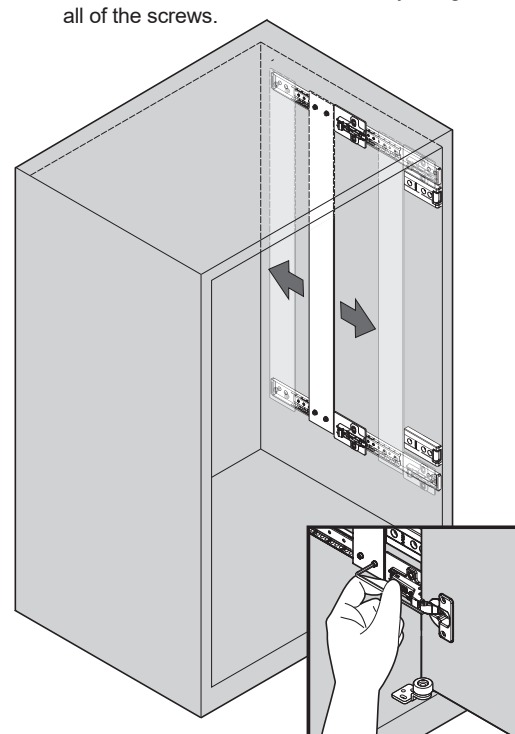
4 Fixing Connection plate

Mount the connecting plate onto the rails temporarily.



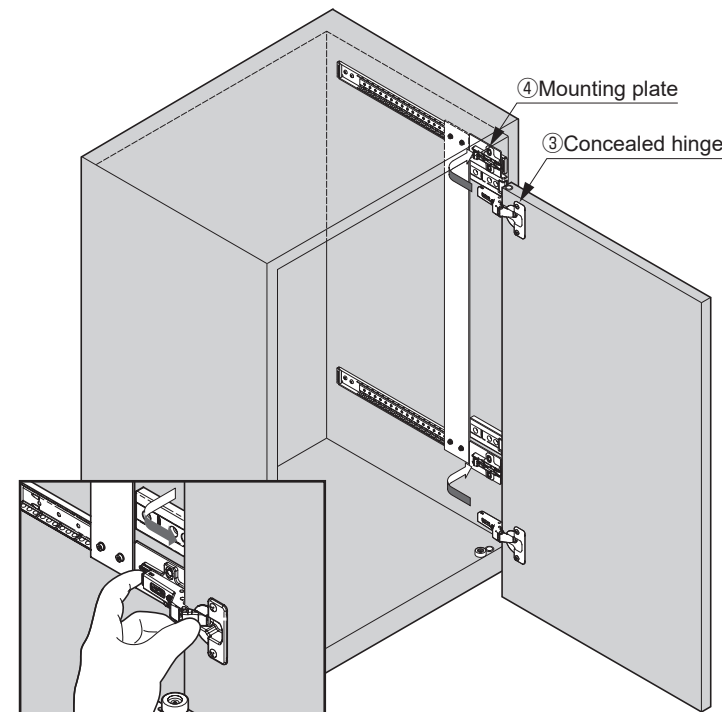
5 Alignment of Rails

- (1) Hold the connecting plate and move it from the front end to the rear end, and align the rails so that the connecting plate moves smoothly.
- (2) Tighten the screws of the connecting plate, and check the movement again.
- (3) Tighten the screws on the rails, and check the movement.
- (4) If the movement is OK, fix the rails by fixing all of the screws.



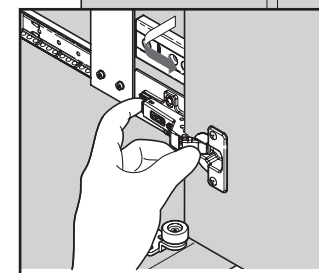
6 Hanging door

- (1) Hold the door and mount concealed hinges on the mounting plates as shown.
- (2) Ensure that all of the screws are tightened firmly.



■How to remove

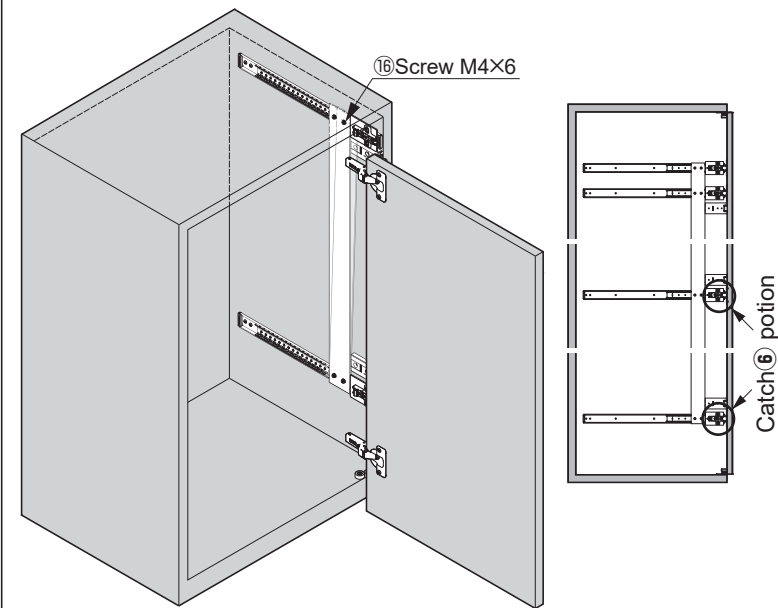
Push the button as shown, and remove the concealed hinge.



7 Adjusting door

How to adjust inclined door like the illustration below.

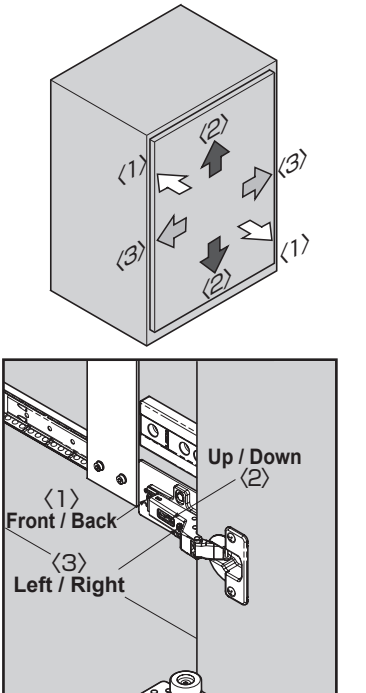
- (1) Remove the door.
- (2) Loosen hexagon socket head screw ⑩.
- (3) Pushing the top of connecting plate ② to the rear, re-tighten the hexagon socket head screw ⑩.



8 Adjusting door position

Door front and rear, Vertical, Horizontal adjustment

If the door is tilted, adjust with the adjustment screws shown below.



! Caution

- Do not use motor screwdrivers.
- Be careful not to overtighten the screws.



SUGATSUNE KOGYO CO.,LTD
Tokyo, JAPAN
Phone: +81 (0)3 3866 2260 E-mail:export@sugatsune.co.jp

SUGATSUNE KOGYO (UK) LTD
Reading, UK
Phone: +44 118 9272 955 E-mail:sales@sugatsune.co.uk

SUGATSUNE EUROPE GmbH
Düsseldorf, GERMANY
Phone: +49 211 53812900 E-mail:sales@sugatsune.eu

SUGATSUNE SHANGHAI Co., LTD
Shanghai, CHINA
Phone: +86 21 3632 1858 E-mail:lamp@sugatsune.com.cn

Guangzhou, CHINA
Phone: +86 20 6639 3552 E-mail:lamp@sugatsune.com.cn

SUGATSUNE KOGYO INDIA PRIVATE LIMITED
Mumbai, INDIA
Phone: +91 22 28314490/91 E-mail:sales@sugatsune.in

SUGATSUNE AMERICA, INC
California, USA
Phone: +1 310 329 6373 E-mail:sales@sugatsune.com

Chicago, USA
Phone: +1 630 317 7072 E-mail:sales@sugatsune.com

SUGATSUNE CANADA, INC.
Phone: +1 514 312 5267 E-mail:support@sugatsune.ca

ISO9001(Japan Offices and Sugatsune America) and ISO14001(Chiba Production division and Logistics center), certified.

2022.11 1423-4