

LAMP[®] STAINLESS STEEL AUTO-OPENING/SOFT-CLOSING FLAP LID SYSTEM

Installation instructions

Thank you for using our product. Before installation, please read this manual thoroughly to ensure correct installation.
Please keep this manual at hand for future reference.

ABOUT THE PRODUCT

- The lid opens automatically when you hold your hand over the sensor.
- The sensing distance of the sensor can be adjusted from 0 to 300 mm by adjusting the knob on the back.

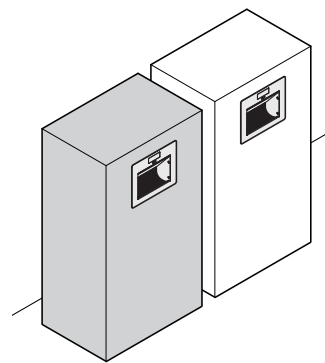
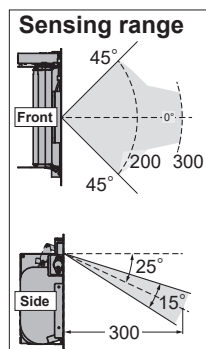
FOR YOUR SAFETY AND CORRECT INSTALLATION

Meaning of symbols

	Warning Caution		Prohibited		Required
--	---------------------------	--	-------------------	--	-----------------

⚠ Caution: If not followed, injury or damage may result.

- ⚠ This product is designed to function when installed vertically as shown below. Horizontal, slanted or upside down installation will result in improper function and may lead to injury.
- ⚠ To avoid any risk of accidental injury, ensure that the product is securely fastened to a support with adequate strength.
- ⊘ Do not use this product for any purpose that is outside of the specifications of this manual.
- ⚠ Do not use outside or anywhere it will be exposed to water. It may cause failure.
- ⚠ Do not use in places where strong radio waves are generated. It may cause malfunction.
- ⚠ Ambient temperature range is 0 to 40° C
- ⚠ The closing speed of the lid may vary according to ambient temperature. If the product is stored below zero degrees allow it to reach room temperature before use.
- ⚠ Due to the characteristics of the sensor, the sensing distance varies depending on the object.



PARTS DESCRIPTION

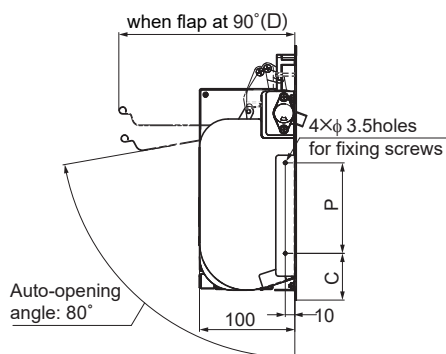
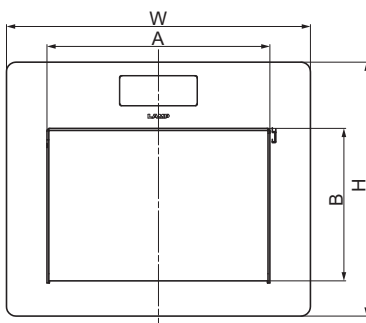
Description	Quantity
Flap lid body	1
Sticker (warning)	1
Sticker (Open)	1
Wiring clips	3
Cover cap	4
Screw jig	1

TOOLS NEEDED FOR INSTALLATION

- AC Adaptor (sold separately)
- Screws (not provided)
Choose the suitable length according to the material to be mounted.
Recommended screw : Tapping screw Nominal 3 4 pcs

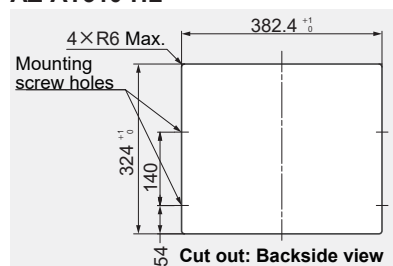
DIMENSION DRAWING

Item No	A	B	W	H	C	P	D
AZ-AT230-HL	234	160	319	266.5	49	95	184.7
AZ-AT310-HL	310	220	395	340	64	140	244.7

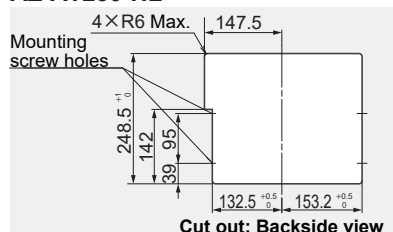


CUTOUT DIMENSIONS

AZ-AT310-HL

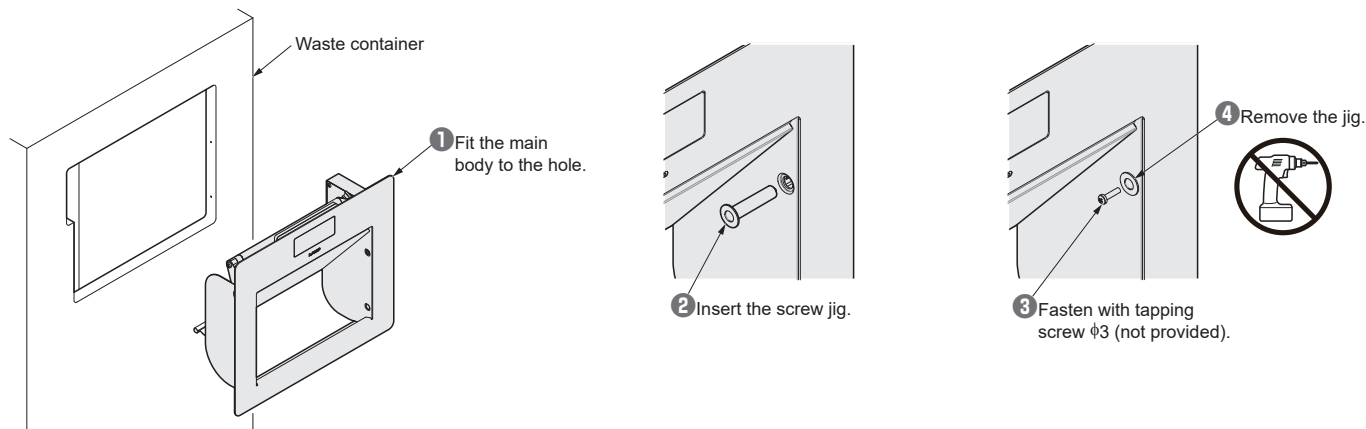


AZ-AT230-HL

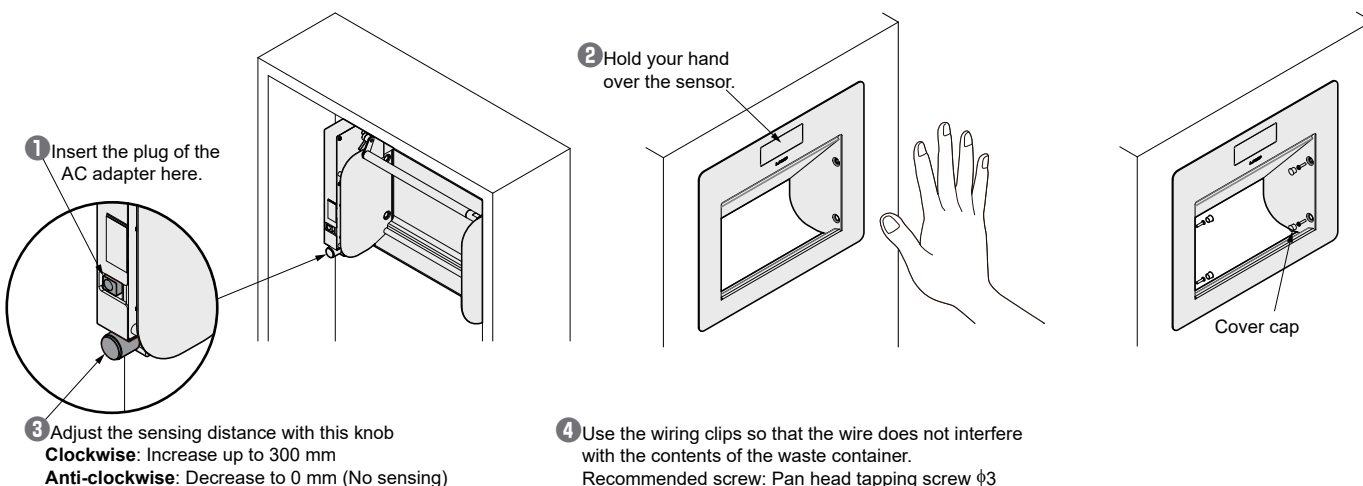


Installation procedure

1 Mounting of Main Body

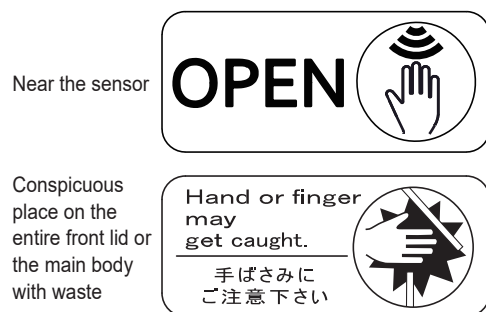


2 Wiring and Adjustment of Sensing Distance



3 Putting on the Cover Caps

4 Pasting the stickers



5 Troubleshooting

Trouble	Solution
No sensing	Make sure that the plug of the AC adapter is connected correctly. If there is an object in the sensing range of the sensor, move it. The sensor does not respond when the sensing distance adjustment knob is turned to the left (minimum). Adjust the position of the knob.
LED lights red	Check that no objects in the front or back of the lid are clogged with dust.
Lid doesn't close fully	Make sure that there is no dust caught in the lid. If that doesn't work, turn the power off and then on again.
Lid doesn't open fully	Check that the back of the lid is not clogged with dust and that cables are not entangled.

6 In case of power outage

The lid can be opened manually just like a normal lid system. The soft close is available.

SUGATSUNE KOGYO CO.,LTD
Tokyo, JAPAN

Phone: +81 (0)3 3866 2260 E-mail:export@sugatsune.co.jp

SUGATSUNE KOGYO (UK) LTD
Reading, UK

Phone: +44 118 9272 955 E-mail:sales@sugatsune.co.uk

SUGATSUNE EUROPE GmbH
Düsseldorf, GERMANY

Phone: +49 211 53812900 E-mail:sales@sugatsune.eu

ISO9001(Japan Offices and Sugatsune America) and ISO14001(Chiba Production division and Logistics center), certified.

SUGATSUNE SHANGHAI Co., LTD
Shanghai, CHINA

Phone: +86 21 3632 1858 E-mail:lamp@sugatsune.com.cn

Guangzhou, CHINA

Phone: +86 20 6639 3552 E-mail:lamp@sugatsune.com.cn

SUGATSUNE KOGYO INDIA PRIVATE LIMITED
Mumbai, INDIA

Phone: +91 22 28314490/91 E-mail:sales@sugatsune.in

SUGATSUNE AMERICA, INC
California, USA

Phone: +1 310 329 6373 E-mail:sales@sugatsune.com

Chicago, USA

Phone: +1 312 461 1081 E-mail:chicagoshowroom@sugatsune.com.

SUGATSUNE CANADA, INC.

Phone: +1 514 312 5267 E-mail:support@sugatsune.ca

2021.08 1447-2